

EYRE PENINSULA
**WASTE AND
RESOURCES
STRATEGY**

2023-2033

ACKNOWLEDGEMENT OF COUNTRY

In the spirit of reconciliation, the EPLGA acknowledges the Traditional Custodians of country throughout Eyre Peninsula and their connections to land, sea and community.

We pay our respects to their Elders past and present and extend that respect to all Aboriginal and Torres Strait Islander peoples today.





**A PROJECT OF THE
EYRE PENINSULA LGA
AND ITS MEMBER COUNCIL
IN PARTNERSHIP WITH:**

- ▶ **Government of South Australia,
Green Industries SA**
- ▶ **Industry stakeholders**
- ▶ **Regional Capacity Building Program –
Local Government Association
of South Australia**



EYRE PENINSULA

Local Government Association



CONTENTS

Foreword	6
Background.....	8
Current Services	12
Eyre Peninsula Map Current Facilities	14
Context, Framework and Future Drivers	15
Our Vision, Mission and Objectives	16
Priority Actions	24
Implementation.....	25
Acknowledgments	26

FOREWORD

The Eyre Peninsula Local Government Association (EPLGA) consists of eleven councils: the District Councils of Ceduna, Streaky Bay, Elliston, Wudinna, Lower Eyre Peninsula, Franklin Harbour, Kimba, Tumby Bay, Cleve and the cities of Port Lincoln and Whyalla. With a population of 57,000, the main land uses are cropping and grazing and main industries agriculture, manufacturing and mining, fishing and aquaculture, retail, health and community services and tourism. With a gross regional product of \$4.2 billion, Eyre Peninsula has the highest GRP per capita of any local government area in South Australia.

In 2004, the EPLGA developed a Waste Management Strategy to take a regional approach to waste management and to provide long-term direction for waste and recycling services for the next 15 to 20 years. The 2004 Strategy was also recognised as one of the actions needed to address Goal 4 of the then EPLGA Strategic Plan, which was to 'Reduce the impact of waste on the natural environment'.

The 2004 Waste Management Strategy highlighted the waste issues being faced by Eyre Peninsula Councils such as:

- ▶ The increasing costs of providing waste management
- ▶ The need to address the environmental impacts of waste disposal to landfill and the increasing costs of managing landfills in a manner that meets environmental legislation requirements.
- ▶ The need to provide effective and efficient waste management services for ratepayers and to cater for increased service requirements associated with tourism in the region.

The key drivers for managing waste have not changed.

The EPLGA has commissioned the review of waste and resources management practices on the Eyre Peninsula to assist its member Councils in the process of transitioning to a sustainable place-based circular economy. This 2023 Waste and Resources Strategy demonstrates how far we have come in the last 20 years and maps out strategic directions for the next 10 years.

The Strategy takes a place-based approach to waste and resources management, an approach which emphasises the characteristics of places as a fundamental starting point for planning and development. Place-based knowledge or information has a geographical position, for example, Whyalla and Streaky Bay will have a different approach to waste management based on population and geographical position (e.g., road transport distance to materials recovery facilities).

Improving services, developing local and regional solutions and transitioning the Eyre Peninsula to a circular economy will require strong cooperation and partnerships between councils, industry and the community. Eyre Peninsula will require bespoke, outside the square unconventional solutions that provide a best fit to our unique challenges and opportunities. To tackle these issues, the EPLGA will create a Waste to Resources Committee for 12 months – their one job will be to provide an ongoing model to govern, implement and resource solutions to Eyre Peninsula waste issues and promote a circular economy.

I would like to acknowledge and commend all involved for their contribution and collaboration to get this Waste and Resources Strategy, and multiple working documents referenced, to where it is to date. There is a real sense of cooperation on Eyre Peninsula and I'm confident that together we can make a real difference in the coming years.

Kind regards,

Peter Scott

Executive Officer

Eyre Peninsula Local Government Association

BACKGROUND

The Eyre Peninsula is a land of rugged coastlines, expansive crops, plentiful seafood, sandy beaches, national parks, rich mineral deposits and an abundance of solar, wind and wave energy.

It comprises the regional cities of Port Lincoln and Whyalla and the District Councils of Ceduna, Cleve, Elliston, Franklin Harbour, Kimba, Lower Eyre, Streaky Bay, Tumby Bay and Wudinna along with remote unincorporated areas serviced by the Outback Communities Authority.

Today the Eyre Peninsula is one of South Australia's most productive regions generating over \$4.05 billion in gross regional product annually. The region is highly export oriented and benefits from established agriculture, commercial fishing and aquaculture industries. Several other industries continue to strengthen and offer exciting opportunities into the future including mining, renewable energy, hydrogen, space and tourism.





Development of the 10-year Plan – The EP Waste and Resources Strategy

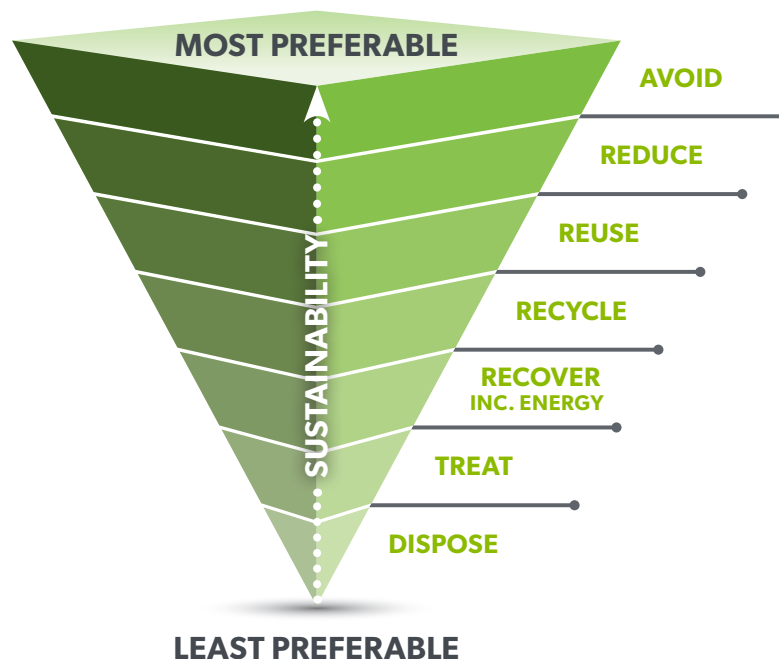
Councils have responsibilities for providing a range of services for their communities, including of waste management services. All EP Councils provide kerbside collection services, Transfer Stations and either operate their own or have access to landfills. Services are provided in-house or in partnership with commercial contractors, progress associations or community groups.

The EP is characterised by a sparse population, large council areas and very long distances between townships and service centres. That creates specific challenges and limitations especially for the scope and efficiencies of kerbside services. The peninsula has sufficient landfill airspace and a well-developed network of Transfer Stations (TFS) and Container Deposit Scheme (CDS) depots.

With the exception of green waste, all other segregated materials are transported to Adelaide-based processing and recycling facilities. A range of materials suitable for recycling are stockpiled locally for prolonged periods of time, or disposed of to landfill in the absence of a feasible alternative at this point in time.

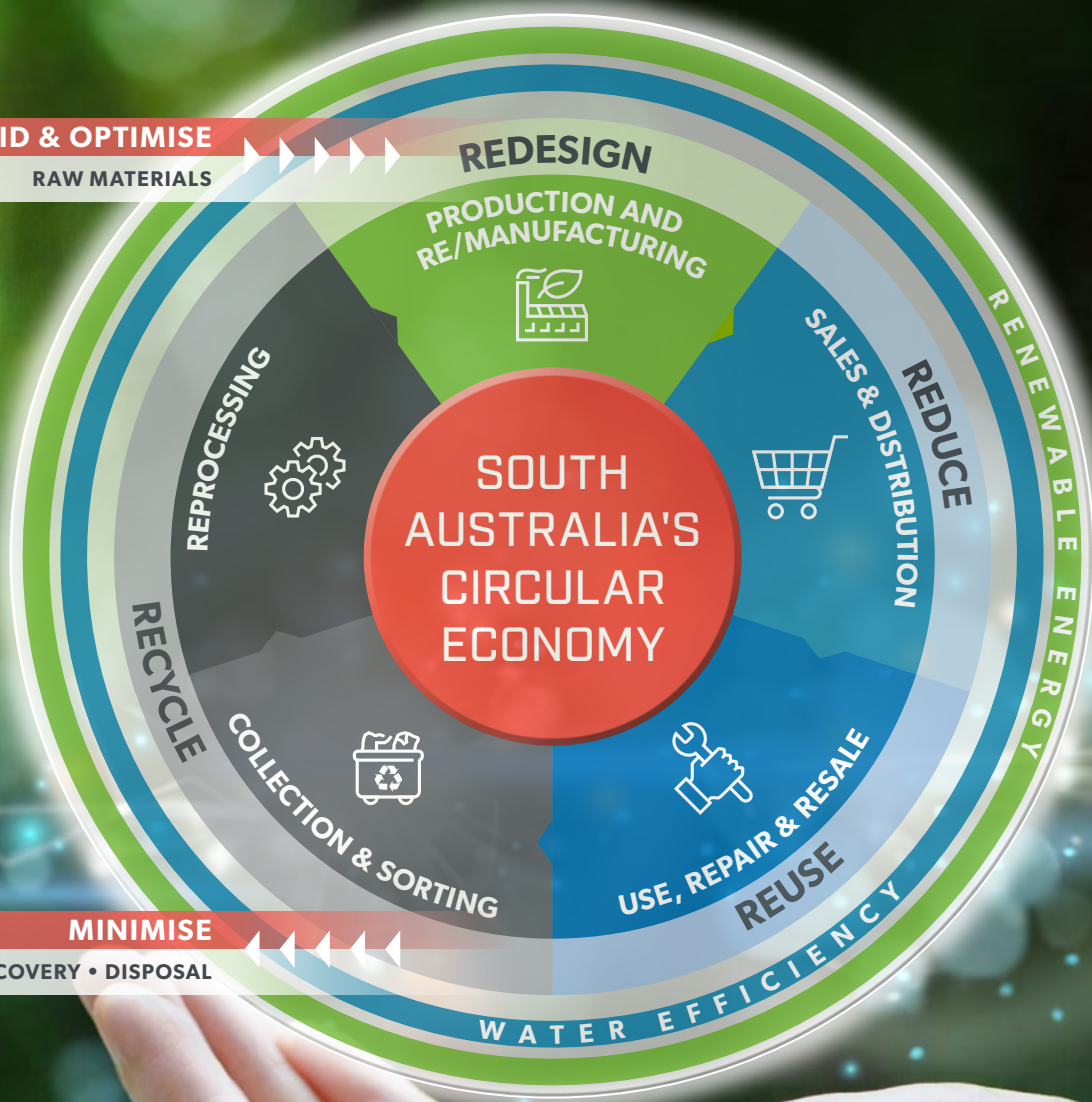
This Strategy acknowledges that distance and isolation will set boundaries, thus Council may continue with specific service structures that best fit the needs of their communities and resource availability.

The EPLGA has commissioned this Strategy to unearth and capitalise on the potential for a collaborative approach between Councils, commercial enterprises, NGOs and government agencies in transitioning from a Linear & Recycling Economy to a Circular Economy (image courtesy GISA, 2022).



AVOID & OPTIMISE

RAW MATERIALS



MINIMISE

ENERGY RECOVERY • DISPOSAL

CURRENT SERVICES

Total Waste and Recyclables Kerbside Collections and Transfer Stations	47,936t
Kerbside Collections (45% of all wastes and resources)	21,471t
Transfer Stations (55% of all wastes and resources)	26,465t
Landfill Total	32,320t
Diversion Total	15,616t
Diversion Rate	32,50%

Kerbside Collections 21,471t
Diversion rate: 23.2%

16,492t

General Waste
Landfill

2,818t

Recyclables
MRF

2,161t

FOGO
Composting

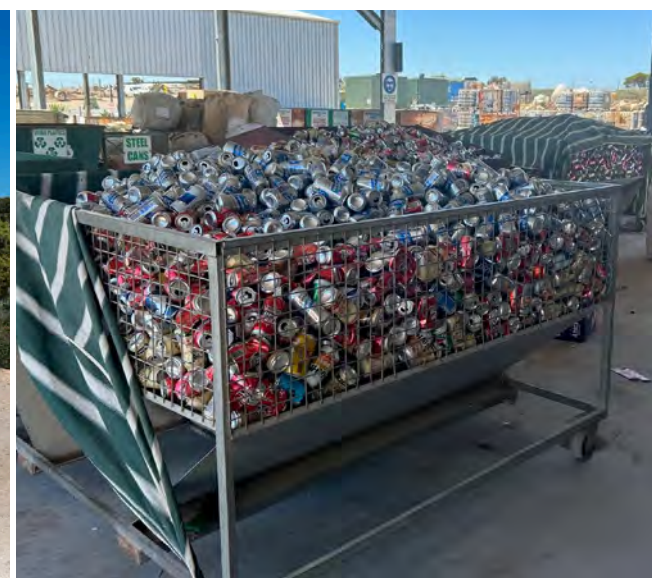
Transfer Stations 26,465t
Diversion rate: 40.20%

15,828t

General Waste
Landfill

10,637t

Diverted to
processing
and recycling



Commercial Waste and Resources

Container Deposit Scheme

- CDS Glass: 1,656t/a
- Non-CDS Glass: 190t/a

Not quantified

- Other recyclables collected at selected depots

(Source: 2023 Audit)

Farms: End-of-life Plastics (estimates)

- Total: *in excess of* 840t/a

(Source: 2022 Survey)

To be quantified

- Scrap metal, batteries, timber, oils, organics

Fisheries and Aquaculture end-of-life materials (estimates)

- Fisheries: 100t-200t/a
- Aquaculture: *in excess of* 400t/a
- Legacy stockpiles across all end-of-life materials: >2,500t

To be quantified

- Other end-of-life materials stockpiled include bollards, polypropylene bags, IBCs, timber, organics

(Source: EPA Report 2013 and Sector data 2013-date)

Organics

To be quantified





- Fisheries and Aquaculture
- Farming Sector

Transfer Stations: >3,340t/a

(included in TFS data)



EYRE PENINSULA MAP CURRENT FACILITIES

-  19 TRANSFER STATIONS
-  16 BOTTLE & CAN DEPOTS
-  7 LANDFILLS
-  1 COMPOST FACILITY

Port Augusta Transfer Station • CDS Depot • Scrap Metal
Port Pirie Transfer Station • CDS Depot • Nyrstar



CONTEXT, FRAMEWORK AND FUTURE DRIVERS

Recent years have seen significant changes in the waste and resources industry and the way the local government sector is transitioning from an essential service provider to managing the challenges and opportunities of developing sustainable communities towards a circular economy.

The following key drivers are important in this process:

Eyre Peninsula LGA	In acknowledging the unique settings of the Eyre Peninsula, the region adopts a place-based approach in engaging local people and all levels of government and industry as active participants in the implementation of the regional waste and resource strategy for the Eyre Peninsula.
Member Councils	Councils undertake best efforts to meet the needs and expectations from the community, businesses and visitors by providing resilient and sustainable systems within the confines of limited resources. The EP LGA supports Councils' Strategic directions and commitments to continuous improvement and actions towards a Circular Economy.
Community and stakeholder expectations	Local people, farmers, industry stakeholders, visitors and local governments place a high value on the unique natural environment they live in and the rich natural resources of the region. Stakeholders are actively engaged in seeking more knowledge on better practices to reduce waste and to turn end-of-life materials into resources.
SA Waste Strategy 2020-2025: A vision for Circular Economy	The SA Waste Strategy sets out targets, objectives and actions to improve waste avoidance, drive higher resource recovery and to support SA's transition to a circular economy. It identifies new directions for food waste, single-use plastics, regulatory waste reforms, education and behaviour change and supports market development through infrastructure investment and other measures. An ambitious target of zero avoidable waste to landfill by 2030 and no new landfills to service metropolitan Adelaide will have flow-on effects for our councils and the EP as a region. Our strategy will assist councils with the implementation of waste reduction and resource recovery initiatives. It strongly supports and acknowledges the important role of communities and collaboration between all stakeholder.
SA Solid Waste Levy	The solid waste levy is charged for every tonne of waste sent to landfill in SA. The levy has increased significantly over recent years, is currently \$78/t for non-metro areas and expected to increase over coming years. Through the EP strategy we will provide pathways to our councils and our communities for waste avoidance initiatives and the reduction of waste going to landfill and reduce associated levy costs.
National Food Waste Strategy, 2017 and the SA Food Waste Strategy 2020-25 Valuing our Food Waste	The national strategy aligns with the United Nation's Sustainability Goal 12 which aims to ensure sustainable production and consumption patterns. The SA strategy supports the national target of halving Australia's Food Waste by 2030 and prioritises SA's actions to address the avoidance of food wastage and the reduction of food waste in the general waste stream in domestic and commercial settings. The EPLGA supports programs and actions that reduce food waste, the establishment of local processing facilities and regional market development in conjunction with organic waste from farming, fisheries and aquaculture.

OUR VISION

To be Regional Australia's best example of a sustainable place-based Circular Economy.

MISSION

Eyre Peninsula Councils working in partnership to influence cultural and behavioural change, to implement sustainable place-based services that drive waste avoidance, reduce waste to landfill and increase resource recovery through collaboration, research and investment.



GUIDING PRINCIPLES

WASTE HIERARCHY AND CIRCULAR ECONOMY

FRAMEWORK: Guide the region in transitioning to a environmentally responsible and financial sustainable place-based Circular Economy.

SERVICE DELIVERY: Provide efficient and flexible services that meet the needs of the community, encourage and support waste avoidance, increase resource recovery and investment into local processing and market development.

PARTNERSHIPS: Develop close partnerships between community, businesses and all levels of government that drive continuous improvement.

OBJECTIVES

FIVE OBJECTIVES will guide programs and actions in the transition of the region towards a circular economy and assist measuring progress.

OBJECTIVE 1

REDUCE WASTE GENERATION AND INCREASE LANDFILL DIVERSION

KEY PRIORITIES

- ▶ Improve systems to reduce and prevent recyclables entering the waste stream with focus on organics, plastics, glass, paper, cardboard and e-waste
- ▶ Implement a central data management system for waste and recycling information
- ▶ Implement targeted education and information programs for residents, commercial enterprises and the farming sector

KEY INDICATORS FOR PROGRESS AND ACHIEVEMENTS (FROM 2021/22 FY BASELINE)

- ▶ The central data management system is in place and updated quarterly
- ▶ Reduction of waste generation per capita by 2% each year
- ▶ Demonstrated financial savings from reduced waste to landfill
- ▶ Reduction of recyclables in general waste by 50 percent (using regional bin audit data 2022 as baseline)

OBJECTIVE 2

INCREASE THE RECOVERY OF RESOURCES

KEY PRIORITIES

- ▶ Improve the recovery of organics, plastics, glass, paper, cardboard and e-waste
- ▶ Develop local/regional processing capacity and local/regional markets
- ▶ Establish an additional composting facility on the EP
- ▶ Support the implementation of targeted programs to strengthen education, stakeholder collaboration and partnerships

KEY INDICATORS FOR PROGRESS AND ACHIEVEMENTS (FROM 2021/22 FY BASELINE)

- ▶ Increase the diversion rate across all materials managed at Transfer Stations by 5% each year
- ▶ Establish the baseline of recovered and recyclable products processed on the EP
- ▶ Environmental and financial savings through reduction in transport kilometres and cost
- ▶ Information and education resources are easily accessible to each target audience

OBJECTIVE 3

DELIVER RELIABLE, FLEXIBLE AND COST-EFFECTIVE SERVICES THAT MEET THE NEEDS OF THE COMMUNITY

KEY PRIORITIES

- ▶ Promote the value of diverting organic material from landfilling
- ▶ Support the establishment of additional capacity for processing of organics on the EP
- ▶ Establish local/regional collection hubs for recoverable resources (Councils with a one bin kerbside system)

KEY INDICATORS FOR PROGRESS AND ACHIEVEMENTS

(FROM 2021/22 FY BASELINE)

- ▶ Support the FOGO Pilot in the City of Port Lincoln area
- ▶ Establish a composting facility in Port Lincoln
- ▶ Pilot a local/regional collection hub by July 2024

OBJECTIVE 4

PROTECT AND CONSERVE THE NATURAL ENVIRONMENT

KEY PRIORITIES

- ▶ Support the farming, fisheries and aquaculture sector to improve the recovery of end-of-life ropes, nets and plastics for recycling, and the diversion of organics to composting
- ▶ Support sector-specific information and networking initiatives and the development of product stewardships
- ▶ Collaborate with businesses, national parks and tourism operators to develop a measured approach between utilising natural resources and preserving the unique natural environment on the EP

KEY INDICATORS FOR PROGRESS AND ACHIEVEMENTS (FROM 2021/22 FY BASELINE)

- ▶ Active participation in the development of stewardship programs (or similar) for farming, fisheries and aquaculture
- ▶ Establishment of a standing committee to develop best practice guides, targeted education and networking programs

OBJECTIVE 5

IMPLEMENT GOVERNANCE STRUCTURES THAT SUPPORT COLLABORATION AND PARTNERSHIPS

KEY PRIORITIES

- ▶ Establish a Waste Management Committee for the EP
- ▶ Develop options for the regional governance structure
- ▶ Establish a shared online platform for communication, reporting and data management
- ▶ Implement sustainable procurement principles

KEY INDICATORS FOR PROGRESS AND ACHIEVEMENTS (FROM 2021/22 FY BASELINE)

- ▶ Establish an online communication platform by December 2023
- ▶ Establish suitable regional and subregional governance structures by July 2024



PRIORITY ACTIONS

PRIORITY ACTIONS	OBJECTIVE				
	1	2	3	4	5
Establish the EP Waste Committee and develop options for regional governance structures	●	●	●	●	●
Educate, inform, engage and collaborate with local people, farmers, fisheries, aquaculture, industry stakeholders, tourism, visitors and local governments to achieve our vision	●	●	●	●	●
Establish a shared online platform for communication, reporting and data management	●	●	●	●	●
Support the implementation of best place-based infrastructure and services for the management of waste and resources on the EP	●	●	●	●	●
<ul style="list-style-type: none"> • Additional composting facility 	●	●	●	●	
<ul style="list-style-type: none"> • Regional collection hubs for recyclable materials 	●	●	●	●	
<ul style="list-style-type: none"> • Regional processing facilities 	●	●	●	●	
<ul style="list-style-type: none"> • Regional end-markets 	●	●	●	●	
<ul style="list-style-type: none"> • Pilot FOGO collections in Port Lincoln 	●	●	●	●	
Support the farming, fisheries and aquaculture sector to improve the recovery of end-of life materials and to establish stewardship programs (or similar)	●	●	●	●	

IMPLEMENTATION

PRIORITY ACTIONS	2023/24	2024/25	2025/26	2026/27	2027/28	2028/29	2029/30	2030/31	2031/32	2032/33
Establish the EP Waste Committee and develop options for regional governance structures	●									
Educate, inform, engage and collaborate with local people, farmers, fisheries, aquaculture, industry stakeholders, tourism, visitors and local governments to achieve our vision	●	●	●	●	●	●	●	●	●	●
Establish a shared online platform for communication, reporting and data management	●	●								
Support the implementation of best place-based infrastructure and services for the management of waste and resources on the EP	●	●	●	●	●	●	●	●	●	●
• Additional composting facility			●	●	●	●	●	●	●	●
• Regional collection hubs for recyclable materials	●	●	●							
• Regional processing facilities			●	●	●	●	●	●	●	●
• Regional end-markets				●	●	●	●	●	●	●
• Pilot FOGO collections in Port Lincoln	●	●								
Support the farming, fisheries and aquaculture sector to improve the recovery of end-of life materials and to establish stewardship programs (or similar)		●	●	●	●	●	●	●	●	●

The implementation schedule is intended to assist and guide stakeholders to work through the actions, the implementation process and timelines

ACKNOWLEDGMENTS

The Eyre Peninsula LGA would like to acknowledge and thank Green Industries SA for their financial contributions and ongoing support, the City of Port Lincoln, NAWMA, Flaglass, Peats Soils and Garden Supplies for their co-contributions to stage 2 of the project, Veolia, EPCBH, farm suppliers, Ag Bureau SA, fisheries and aquaculture enterprises for their in-kind support throughout the project and Sustainable Solutions for their involvement in the development of the EP Waste and Resources Strategy 2023-2033.

Authors: **Peter Scott**
Executive Officer
Eyre Peninsula Local Government Association

Marina Wagner
Sustainable Solutions

ABBREVIATIONS

CDS Container Deposit Scheme (10 cents containers)

CE Circular Economy

EPA Environment Protection Authority

EP Eyre Peninsula

EP Strategy EP Waste and Resources Strategy 2023-2033

FOGO Food Organics and Garden Organics

GISA Green Industries South Australia

LGA Local Government Association

NGO Non-for-profit Organisation

Product Stewardship A policy approach recognising that manufacturers, importers, governments and consumers have a shared responsibility for the environmental impacts of products throughout its full lifecycle.

SA South Australia

Waste Hierarchy A preferential order of waste management options based on environmental benefits; often framed to include, in descending or ascending order of preference: Avoid, Reuse, Recycle, Recover, Treat and Dispose.





EYRE PENINSULA

Local Government Association

Peter Scott

Executive Officer

Eyre Peninsula Local Government Association

pscott@eplga.com.au

0455 026 000

AN INITIATIVE OF THE
EYRE PENINSULA LGA
IN PARTNERSHIP WITH
GREEN INDUSTRIES SA



Government of South Australia

Green Industries SA

