

# EP Water Task Force

## Inaugural Meeting

Held at Wudinna Community Club

On Thursday 30 November 2017 at 3:30pm

### **ROLL CALL**

#### **Present:**

Dion Dorward	RDAWEP
Brad Riddle	RDAWEP
Peter Arnold	DC Cleve
Bernadette Clelland	DC Franklin Harbour
Deb Larwood	DC Kimba
Joy Hentschke	DC Streaky Bay
Dean Johnson	DC Kimba
Sean Holden	LGA of SA
Bryan Trigg	DC Cleve
Bruce Green	City of Port Lincoln
Travis Barber	DC Streaky Bay
Denuir Moses	Wudinna DC
Dave Allchurch	DC Elliston
Robert Starr	DC Franklin Harbour
Kym Callaghan	DC Elliston
Phil Cameron	DC Elliston
Arthur Johnstone	DC Elliston
Sam Telfer	DC Tumby Bay
Peter Scott	RDAWEP
Geoff Moffatt	DC Ceduna
Trevor Smith	DC Tumby Bay

Glynn Ashmann	SA Water
Andrew Klos	DEWNR
Steve Barnett	DEWNR
Paul Sanelli	SA water
Jonathon Clark	EPNRM
Diana Laube	EPNRM
Tony Irvine	EPLGA

**Apologies:**

Alan McGuire	Wudinna DC
Allan Suter	DC Ceduna
Chris Cowley	City of Whyalla
Lyn Breuer	City of Whyalla
Chris Smith	DC Franklin Harbour
Trish Aukett	City of Port Lincoln

**GENERAL BUSINESS**

**Welcome**

Diana Laube, Presiding Member EPNRM Board, took the chair and welcomed all to the inaugural meeting of the EP Water Task Force.

**Acknowledgement of Country**

Diana also acknowledged the country we were meeting on and all those ancestors with an affiliation to the country.

**Agenda:**

**Background and Content:**

Jono Clark gave the information connected to the background of the joint task force and referred to the terms of reference for the task force.

**EPLGA Update:**

Each Council was invited to update their projects and development status since last advising DEWNR of such.

DC Tumby Bay

- Port Neill CWMS - operational
- Storm water planning
- Increase in industrial area development into the future
- Cape Hardy in the future

DC Ceduna

- Nil

DC Franklin Harbour

- CWMS in Cowell operational
- Foreshore development

DC Elliston

- Nil

DC Streaky Bay

- Nil

Wudinna DC

- Iron Road Project and expected increase in development

City of Port Lincoln

- Residential DPA – 15 years of development planning in place
- Storm water – flood mapping & management plans
- Power Black out – could affect water supply – close last Sept in prolonged blackout
- Planned SA water upgrade to Billy Lights Point treatment plant – more waste water means higher salinity etc.

DC Kimba

- Radio active waste facility – water requirements unknown

DC Cleve

- Future CWMS at Arno Bay – may be wider than just foreshore area.
- 2 Graphite mines eminent and will need water – how much & what type of water?

City of Whyalla

- An apology

DC Lower EP

- An apology

## RDAWEP Update

Dion Dorward addressed the meeting on the following:-

### Mining

- realistic quantity of water required
- may use other underground water
- could also use desalinated water
- rest of region may be able to use mining surplus water produced
- power and water affect viability of mining projects

Water to be used as an economic driver

Water Re-use & storm water capture – Councils improving in this area and still some way to go to maximise the opportunities

## DEWNR Update

A presentation was made to the task force highlighting:-

- currently developing the statement of supply and demand – release expected early 2018
- statistics given on use and predictions going forward
- hard to capture accurate statistics around re-used water and storm water used.
- Demand & supply with 95% demand scenario – 2025 will see demand outstrip supply
- Demand & supply with 50% demand scenario – 2036 will see demand outstrip supply.
- A ground water status update was given comparing lens etc.

## SA Water Update

A presentation was given- see the attached presentation. Highlighted was the following:-

- Uley South is the primary supply – 70% approx.
- Iron Knob – Kimba pipeline (River Murray) other supply – 30% approx.
- SA Water are talking to mining companies in the region and are willing to supply
- 50GL State Township supply – only using 33GL
- Any upgrade to Iron Knob – Kimba pipeline to be financially viable
- Long Term Plan includes a desalination plant at Sleaford Bay plus a series of other options.
- Community Engagement was discussed at length

### Community Engagement

- Best for this group to engage with communities through the EPLGA Councils as they represent their communities
- Other options may be – café sessions – drop in and chat to the experts

- Industry advisory groups as needed
- Be futuristic not historical

Outcomes:

EP Water TASK Force will engage through the individual Councils, RDAWEP & EPNRM.

Suggested methods were through:

- Industry groups (RDAWEP)
- Café style engagement with experts on hand
- Forums

Action/ Decision:

- process for groups or individuals wanting to address the EP Water Task Force – to write to Task Force then 3 regional organisation CEO's to make decision of whether deputation/ appearance request is accepted or not.
- Future meeting – invite ESCOSA to present on their reporting requirements for water businesses and ensure Council water operations managers are at the meeting too – the EPLGA Engineering & Works Committee members.

Meeting closed at 5:25pm

Attached: SA Water's presentation

# Eyre Peninsula Water Security 2017 Update

## Eyre Peninsula Water Taskforce

November 2017



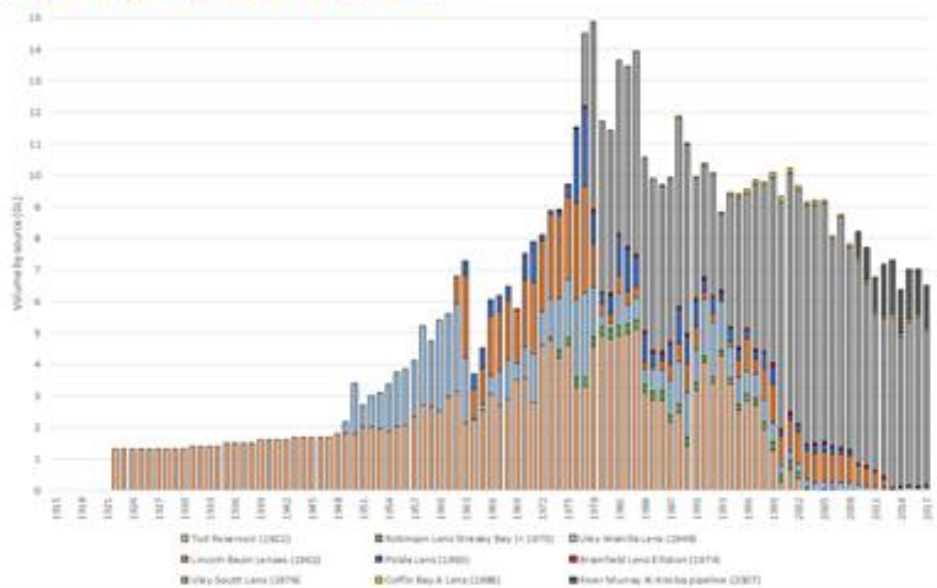
## Agenda

- Historic Demand
- Demand Forecast Modelling
- Allocations and Demands
- Water Resource Investigations
- Long Term Planning (Eyre Peninsula)
- Other works

Page 2



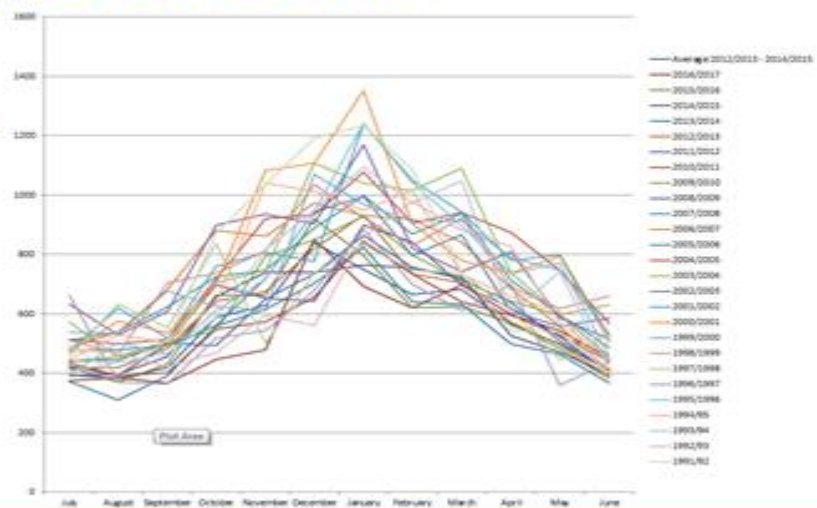
# Historic Demand



Page 3

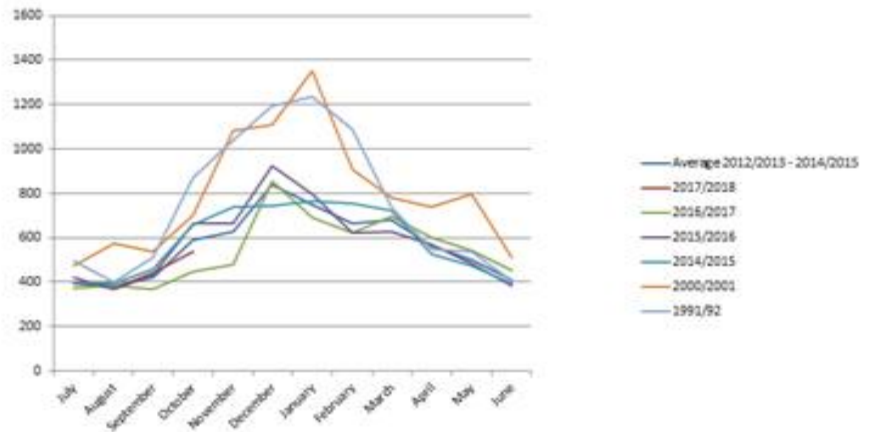
# Monthly breakdown

Monthly extractions (ML) for the last 26 years showing the broad demand profile.

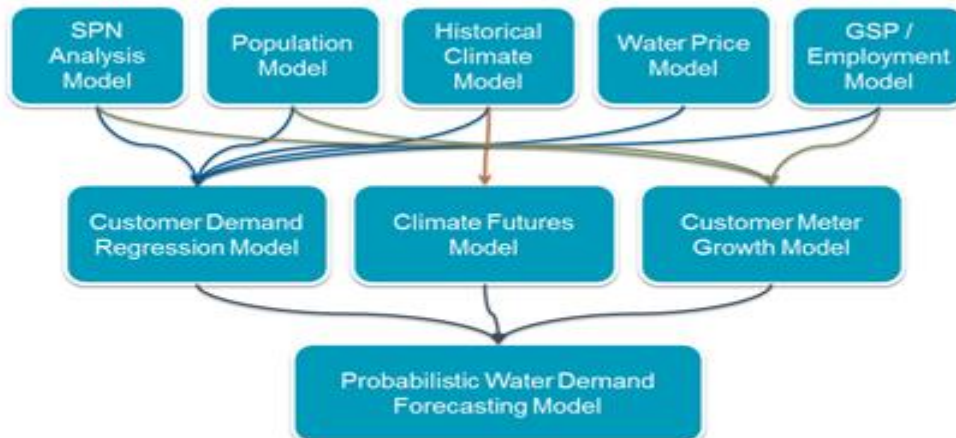


Page 4

# Key Demand Years

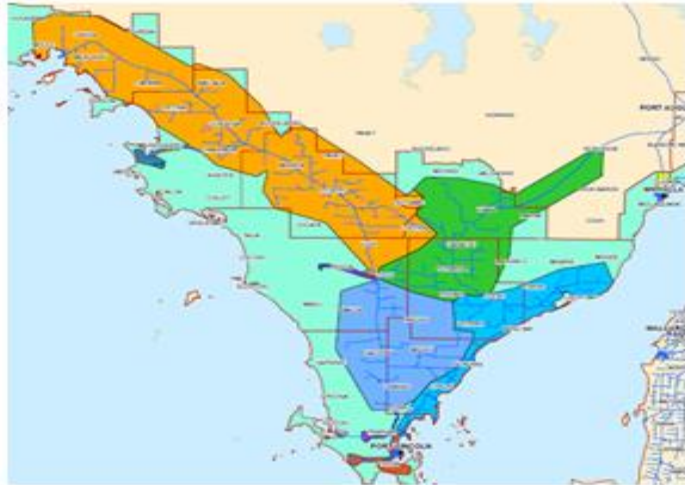


# Demand Forecast Modelling





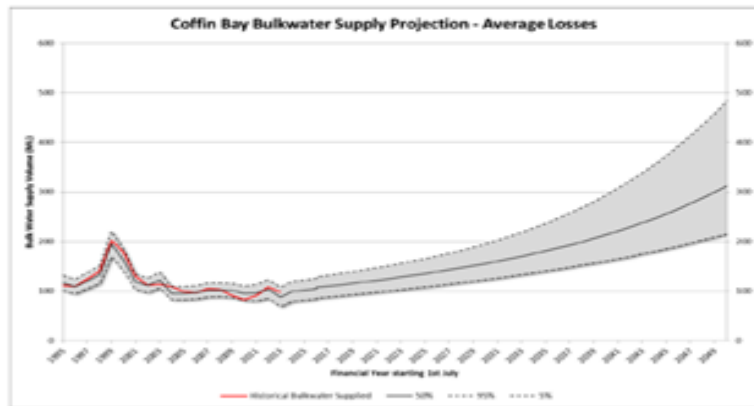
# Model Zones



Page 7

# Coffin Bay

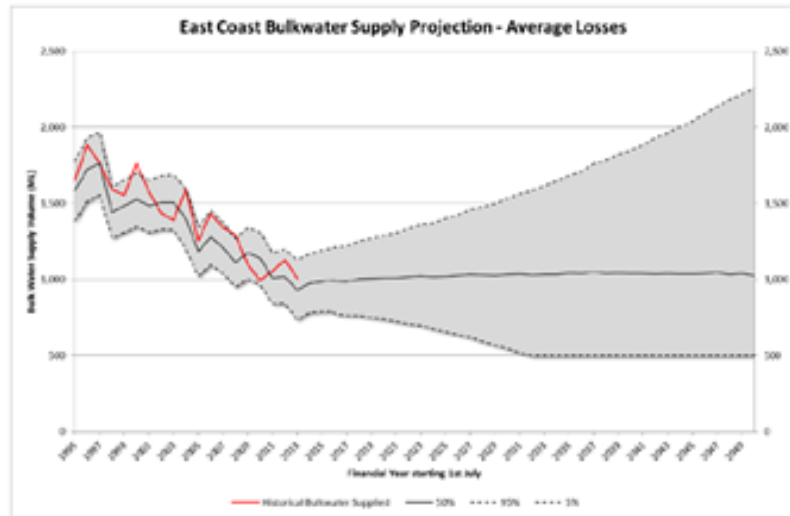
Regression Parameters for Residential	Regression Parameters for Non-Residential
Average Annual Max Temperature.	Average Annual Max Temperature.
Estimated Residential Population.	Estimated Residential Population.
Water Restrictions	ERP per Residential Meter.
	GSP per Non-Residential Meter



Page 8

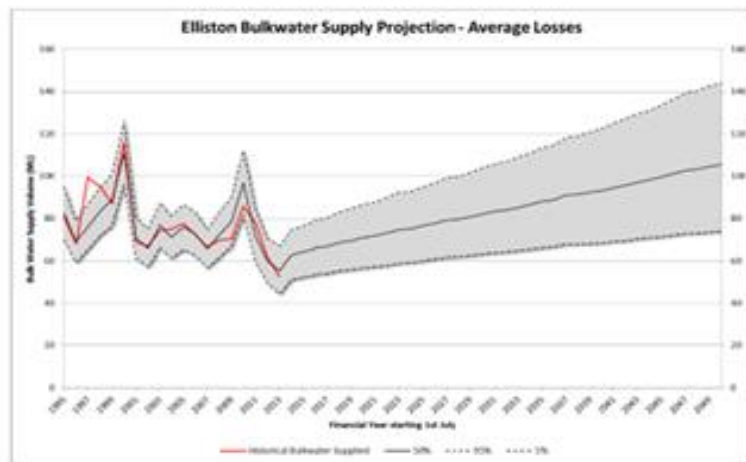
# East Coast

Total Annual Rainfall	Total Annual Rainfall
Annual Number of 18oC Cooling Degree Days	Annual Number of 18oC Cooling Degree Days
Real Price	Estimated Residential Population
Water Restrictions	GSP per Non-Residential Meter Water Restrictions



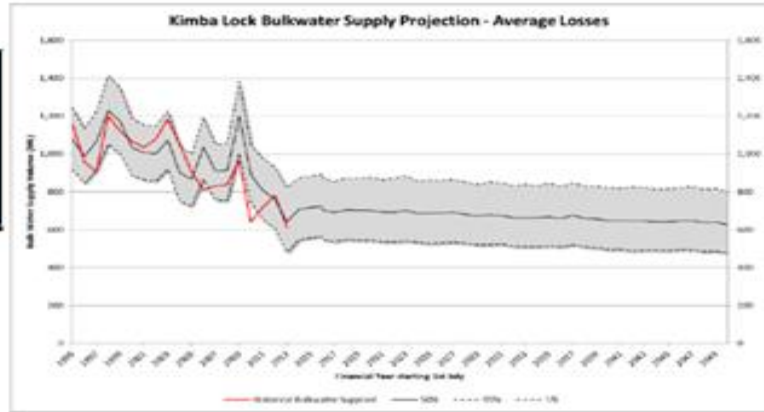
# Elliston

Total Annual Rainfall	Total Annual Rainfall
Morton Potential Evapotranspiration	Annual Number of 12oC Cooling Degree Days
SA Gross State Product	Morton Potential Evapotranspiration
Water Restrictions	SA Employment
	Real Price



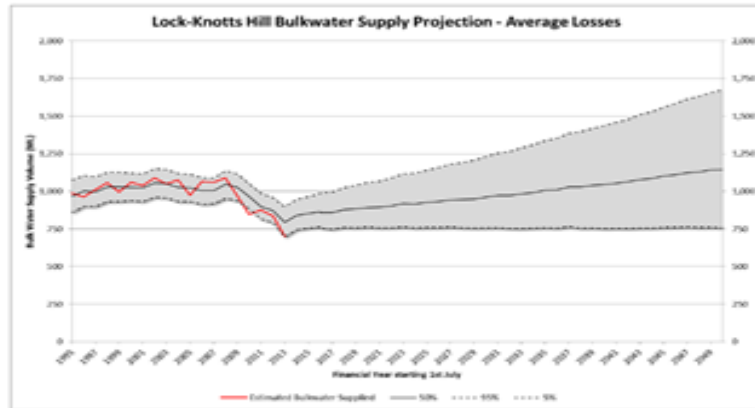
# Kimba - Lock

Annual Number of 12oC Cooling Degree Days.	Total Annual Rainfall.
Real Price.	Real Price.
SA Gross State Product.	Water Restrictions
Water Restrictions	



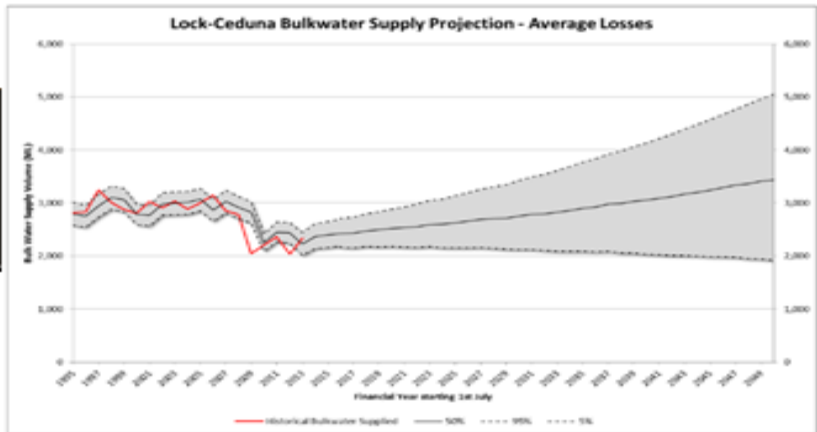
# Knots Hill - Lock

Total Annual Rainfall.	Total Annual Rainfall.
Annual Number of 12oC Cooling Degree Days.	Estimated Residential Population.
Real Price	SA Employment
Water Restrictions	Water Restrictions



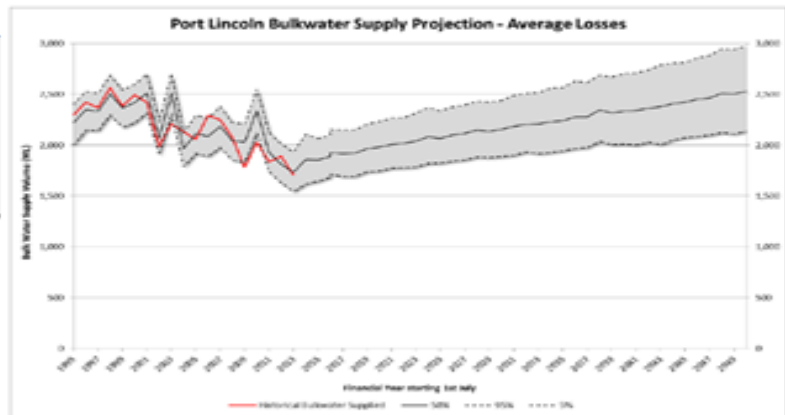
# Lock - Ceduna

Annual Number of 18oC Cooling Degree Days.	Total Annual Rainfall.
Real Price	Estimated Residential Population.
Water Restrictions	GSP per Non-Residential Meter Water Restrictions



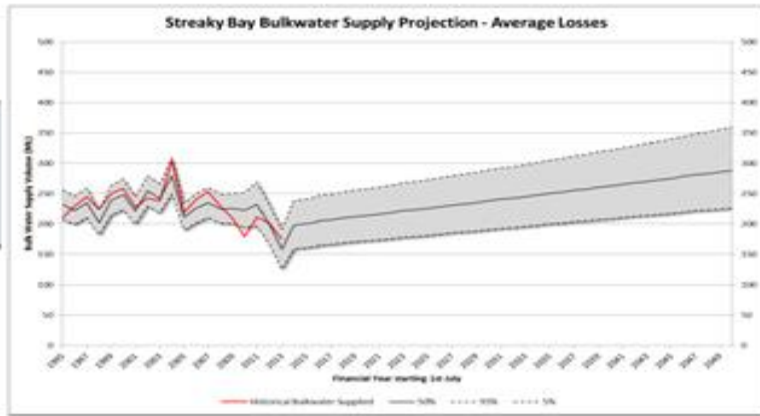
# Port Lincoln

Total Annual Rainfall.	Total Annual Rainfall.
Morton Potential Evapotranspiration.	Morton Potential Evapotranspiration.
Real Price.	Real Price.
SA Gross State Product.	Water Restrictions
Water Restrictions	



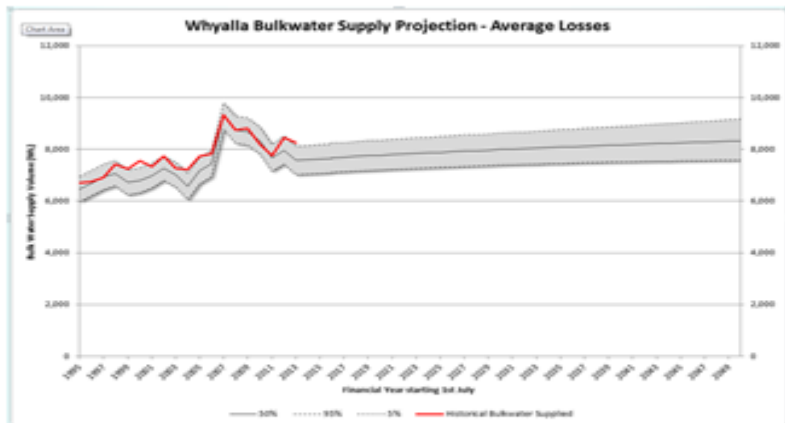
# Streaky Bay

Average Annual Max Temperature.	Morton Potential
Real Price.	Evapotranspiration.
Water Restrictions.	Estimated Residential Population



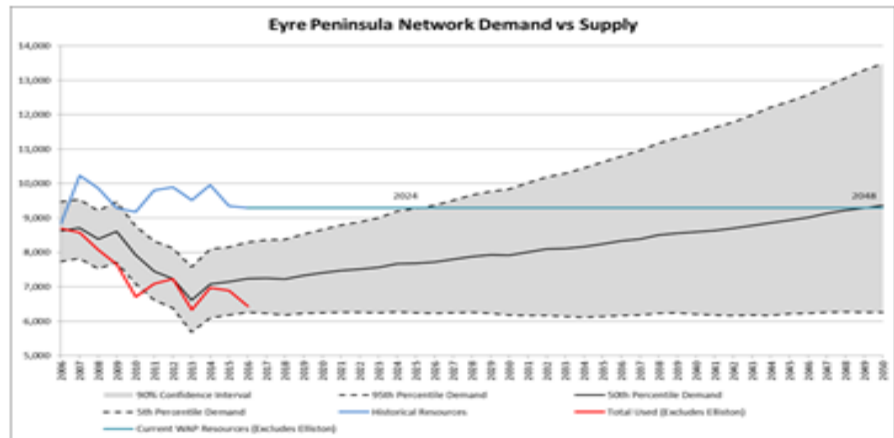
# Whyalla

Average Annual Max Temperature.	Total Annual Rainfall.
Real Price.	Morton Potential
Water Restrictions.	Evapotranspiration
	Estimated Residential Population.
	Water Restrictions



# Eyre Peninsula Demand Forecast

Excludes Whyalla and Elliston



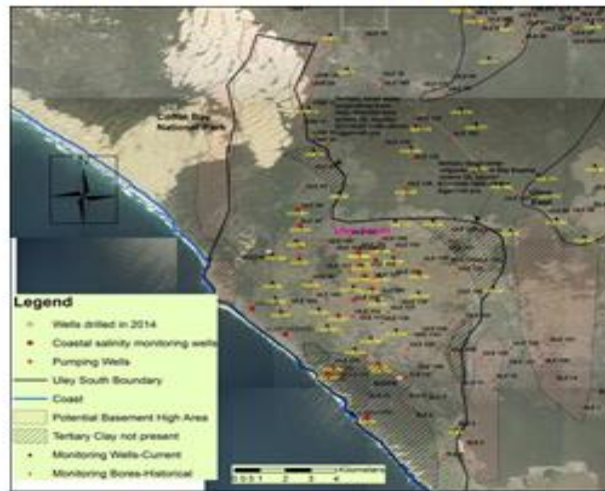
Page 17

# Allocations and Demands

Forecast	Jul 2014	Jul 2015	Jul 2016	Jul 2017
Coffin Bay Groundwater	119.654	119.654	105.785	105.785
Lincoln Basin Groundwater	625	8.1	4.7	4.7
Uley South Groundwater	7353.463	7353.463	7249.893	7249.893
Uley Vanilla Groundwater	155.379	155.379	223.954	230.88
Polda Groundwater (ML)	0	0	0	0
Iron Knob - Kimba Pipeline	1705.449	1705.449	1705.449	1705.449
Historical Resources	9958.945	9342.045	9289.781	9296.707
Current WAP Resources (Exc			9289.781	9296.707
Total Used (Excludes Elliston)	6967.8	6896	6437.7	

Page 18

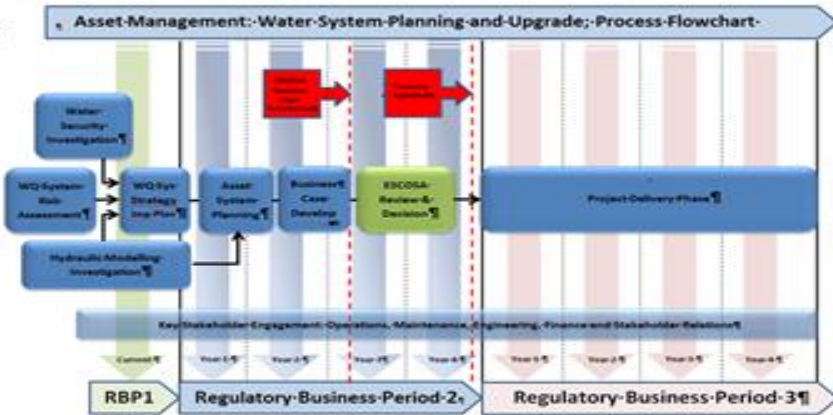
# Water Resource Assessments



Page 19

# Long Term Planning

Regulatory Business Proposal



Page 20



# EP Long Term Plan

- SA Water's current Long Term Plan for EP was completed in 2008
- Since then we've regularly reviewed major assumptions in the plan to ensure reliable service can still be provided into the future
- Water security is a key issue
- Concerns regarding the balance between water security, economic growth and environmental protection
- Affordability of developments and new connections
- It is now timely to complete an overall review of the Long Term Plan

Page 21

## Other Works

### Tod Reservoir

- All infrastructure in place
- Revegetation plantings completed
- Operational Management Plan

### Uley South Backup Power

### Lock Pump Station

### Pt Lincoln WWTP and Sewer Network Upgrades.

Page 22



**Thank you**

